

GROW ASHLAND

ECONOMIC DEVELOPMENT OFFICE

THE ECONOMIC PULSE

"The Role of Economic Development in the Ashland Community"

Economic Development (ED) comes in many shapes and forms. Often-times, people struggle to define economic development and the role we play within our community. While the goal of each ED office is the same; create jobs, bring capital investment to the community, and grow the economy, each office has a different way of accomplishing these goals. In Ashland, we work with any business, company, or entrepreneur that creates a job. In some cases, we may rely on our partners such as the Small Business Development Center at Ashland University or SCORE to work with existing small business owners or start-up entrepreneurs.

The Grow Ashland Economic Development Office focuses on business retention, expansion, attraction, and entrepreneurship. We are the entity that can help a project get from start to finish; we have the process down to a science to make sure that businesses and companies are able to expand and grow in our community. Whether it's assisting with locating land or an existing building, developing a business plan and projections, setting up the company to do business in Ohio, assisting with finance options, marketing/advertising assistance, local tax incentives, or QuickBooks training, our office is on-the-ground and ready to make sure that folks get the best possible customer service in the State of Ohio. We also take the lead on setting up meetings with local elected officials and resources, depending upon the situation.

The last and most important job of any economic development office is to consistently meet with area companies. These are known as BR&E (Business Retention & Expansion) visits. With 96 manufacturers and distribution centers in Ashland County, we meet with companies every other year, unless a company reaches out to us for a specific need. Our Know Ashland, Grow Ashland, BR&E Program allows us to continue to grow and build our relationships with area companies. Each year, we create a summary of all the BR&E data collected and share the report with our members and businesses who participated in the visits. We are starting this year's round of BR&E visits July 15, so if you are interested in a conversation, please contact our office.

-Kathy Goon, Grow Ashland Executive Director



ISSUE 2019-2

Grow Ashland Mission.....	1
January-June Events.....	2-3
New Member Benefits.....	4
Grow Ashland Team.....	5
Featured Properties.....	6
Company Spotlight.....	6
2019 Members.....	7
MAGF Business Spotlight.....	8

www.growashland.com

(419) 289-3200

JANUARY - JUNE EVENTS

March 6 - Annual Meeting

Our Annual Economic Development Forecast Breakfast took place at Bella Bleu's Waters Edge Event Center. We were joined by over 100 community members and colleagues who gathered to hear from our two guests speakers: Erica Lashley the Site Director for Charles River and CEO Myles Noel from Central Ohio Medical Textiles (COMTEX). Erica shared with us the history of Charles River Laboratories and the acquisition of Wil Research. The Ashland location is the largest employee based laboratory in the world for Charles River. In 2018, 85% of the FDA approved drugs were developed by Charles River. Myles Noel shared the exciting news of their expansion from their Columbus flagship facility to Ashland. COMTEX has been in construction on the US 250 By-Pass since October 2018. This 70,000 sq ft commercial laundry facility will mean a capital investment of roughly \$20,740,000 and the addition of 75 to 100 jobs in the first three years of operation. The Ashland Facility is expected to process 25 million pounds of laundry per year with the ability to process an additional 25 million pounds of overflow from the Columbus Facility.

March 12 - Manufacturing Roundtable

Our first Manufacturing Roundtable was in the new state-of-the-art conference/community room located in the recently completed SJE, Inc. building. The building is the newest addition to the Ashland Business Park. Tim Bartholomew was our local host at the facility and Jay Dienst, the Director of Marketing from the Detroit Lakes, MN corporate office joined us as well. Our guest speaker was Bob Schmidt, Senior Growth & Innovation Advisor with MAGNET. His presentation was on Employee Engagement. Jay Dienst shared the company's history and ESOP (Employee Stock Ownership Plan) structure, followed by small group tours of the entire facility. A special kudos to Simonson Construction Services, Inc. who built the new facility. The event was attended by area manufacturers, distribution representatives, elected officials, and Grow Ashland Economic Development Board Members.

May 23rd — Engaging the Amish Community in Your Workforce

Our Guest speaker was Joseph Shrock, owner of Shrock Premier Custom Construction, Shrock Prefab, Shrock Restoration (Rainbow International Restoration of North Central Ohio) and the Flixible Building. In May of 2019, he was named Equipment World's 2019 Contractor of the Year. We had manufacturers representing the entire county, at the Hedstrom Training Center to learn more about the obstacles and opportunities in employing the Amish.



JANUARY - JUNE EVENTS



May 28th—TWG DEVELOPMENT UNION LOFTS

Union Lofts will be a three-story, 55,000-square-foot complex, consisting of one, two, and three bedroom apartments and will have a community room, fitness center, and an on-site green space. The 48-unit complex will be located at 1100 Sugarbush Drive.

Union Lofts is an affordable housing complex where income guidelines are based on the average median income. The rent is no more than 30% of the yearly income for that qualifying household.

TWG Development, an Indianapolis-based developer, began construction on the complex and plans to open the apartments in the Spring of 2020. The total investment of the project is around \$8.7 million dollars at this point.

June 3rd —GROW ASHLAND'S NEW LOCATION

We moved into the city-owned offices located at 1483 Sandusky Street in April 2015. While we are very appreciative of the use of the building and the purpose it served for over four years, the Board of Directors decided that it was time for the Economic Development office to have a more professional appearance. Although many of our companies enjoyed making the deal "over the kitchen table", we believe that those same folks will like our new offices as well. Jerry Baker is the owner of the 605 Westlake Drive Office Building. He graciously agreed to lease us a section of the 12,000 square foot building. We are using 6 offices, the conference room, and the cafeteria. The Community Improvement Corporation of Ashland, Ohio and the Ashland County Land Reutilization Corporation each have offices as well. There are additional offices that can be used by companies, seeking to expand or relocate to our area, if they need somewhere to make phone calls or answer emails.



June 23rd—ANNOUNCEMENT of CHICK-FIL-A FOOD TRUCK



Chick-fil-A Strongsville owner, Brian Wellman, announced that he was receiving one of the very few Chick-fil-A food trucks in the country! Chick-fil-A Strongsville committed to Tuesdays in Ashland.

On Saturday June 29th, the Chick-fil-A food truck made it's first appearance in Ashland at the Ashland Balloonfest.

The Chick-fil-A food truck will be rotating to different locations in Ashland, every Tuesday!

The hope for the food truck is that it gets enough business that it makes Chick-fil-A open a brick-and-mortar location in Ashland!

NEW MEMBERSHIP BENEFITS

**2019
MAGF
BOARD of
DIRECTORS**

PRESIDENT
Georgia Kauffman

VICE PRESIDENT
Jordan Lance

TREASURER
MaryAnn Wilson

**SECRETARY &
EXECUTIVE DIRECTOR**
Kathryn (Kathy) Goon

**IMMEDIATE
PAST PRESIDENT**
Brian Hinkle

BOARD MEMBERS

Marilyn Byers
Eric Koppert
Tom Lavinder
Lynette Piper
Kerry Rich
Tom Stake
Mayor Steve Stricklen
Sally Truax
Chris Tuttle
Eric Young

Grow Ashland's "Growth Lab"



As one of our members, you can now take advantage of reserving our new Growth Lab. Our Growth Lab can seat up to 40 people. We also have a TV monitor that can display videos or slideshow presentations for your event, using your laptop.

Thank you to
**RETURN
POLYMERS**

for being our **FIRST** member to use our Growth Room! They hosted an orientation event for their new employees.



Grow Ashland's "Grand Conference Room"



As one of our members, you can also reserve our Grand Conference Room which seats up to 12 people.

If your company is interested in reserving our Growth Lab or our Grand Conference Room, please contact our office for more information.

GROW ASHLAND TEAM



Katie has always had a passion for working with and helping people. She is our new Office Manager and comes to us with several years of office experience. If you think she has a familiar face, it may be from her previous experience working in the medical/dental field, in the Ashland community.

She has been married to her husband, Dave for 18 years. Together they have 3 sons; Kolton, Karter, and Kaden. She enjoys spending time with her family, attending her boys' sporting events, traveling to the beach, and being involved in the community.

Katie is looking forward to greeting everyone with her smiling face and managing the office to its fullest potential!

WELCOME



Cameo is well known in the community from working at her previous job at Coldwell Banker Ward Real Estate, for well over 5 years. She has helped many people relocate to the Ashland Area.

Cameo has lived in Ashland most of her life and is a Mapleton graduate. Cameo is a mother of two boys; Blake and Jace, who both attend Ashland City Schools. In her spare time, she enjoys creating memories with her family and traveling to new places.

Cameo is excited about working on projects that will help Ashland Grow and gaining knowledge from working with Kathy Goon.

2019

BOARD of DIRECTORS

PRESIDENT

Mike Welch

County Commissioner

VICE PRESIDENT

Matt Miller

City of Ashland Mayor

TREASURER

Mike Kelly

Ball Bounce & Sport CFO

SECRETARY

Keith Boales

CIC President

AT-LARGE

Georgia Kauffman

MAGF President

AT-LARGE

B.J. Harvey

Ohio Carbon Industries

AT-LARGE

Ben Uselton

BCU Electric

EXECUTIVE DIRECTOR

Kathy Goon

PROJECT COORDINATOR

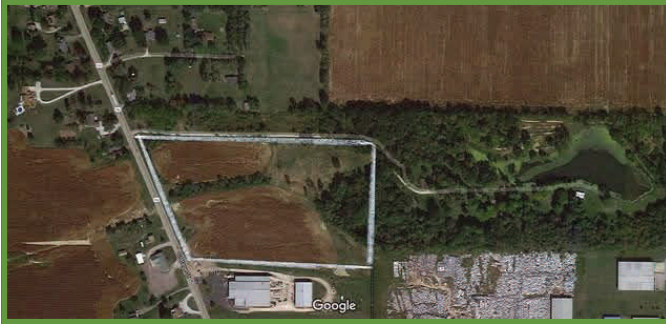
Cameo Bahr

OFFICE MANAGER

Katie Kissel

FEATURED PROPERTY

US RT 250 NORTH, ASHLAND, OH 44805



10 acres available for a commercial building site located in the city of Ashland, zoned M-3. City utilities are available to the site. Great location on a highly traveled and visible State Route. There is approximately 564 ft of frontage.

\$165,000

COMPANY SPOTLIGHT



To learn more about ORIGO and its complete line of fat supplements, please visit the company's website at www.origofat.com.

WELCOME ORIGO TO ASHLAND

ORIGO, a leading manufacturer of fat supplements for the dairy, swine, and poultry markets, opened its new manufacturing facility in Ashland, OH. Located at 1025 Faultless Drive, the plant's three buildings cover 150,000 square feet and will increase the company's production capacity by a factor of five.

"It goes without saying that we're very excited about the opening of this new state-of-the-art manufacturing facility," noted Michael Hippert, chief executive officer. "Our original manufacturing plant in New Ulm, MN has been operating at full capacity for several months, and the new plant will enable us to grow and offer more alternatives to companies needing fats and oils, whether in dry or liquid form. It also allows for expansion into other product lines that may require new manufacturing processes."

According to Hippert, ORIGO installed two new rail spurs serviced by the Ashland Railway, giving the company access to major Tier 1 railroads. In addition, the new plant includes 350,000 gallons of storage capacity, with more tanks to be added soon.

Hippert noted that logistical costs are on the rise, and this was a key factor in building the new plant. "Not only will we be closer to our suppliers, but ORIGO will be able to service our customers in the Eastern U.S. in a more timely and cost-efficient manner."

THANK YOU TO OUR 2019 MEMBERS

LEGACY (\$5,000+)

Ashland County	First-Knox National Bank
City of Ashland	Mohican Area Growth Foundation
Critchfield, Critchfield & Johnston Attorneys	University Hospitals / Samaritan

STRATEGIC (\$1,500-\$4,999)

Ashland University	Minnich Manufacturing
Aspen Management	Simonson Construction Services, Inc.
Ball, Bounce and Sport/Hedstrom	

DEVELOPMENT (\$1,000-\$1,499)

American Augers	Lippert Enterprises
Ashland Scale	Ohio Carbon Industries
BCU Electric	Spink Properties (Buffalo Wild Wings)
Cabot Oil	Sutton Bank
	Transformation Network

GROWTH (\$500-\$999)

Ashland Conveyor	COMTEX	Ohio Electric Control
A&M Fire & Safety Equipment	Hampton Inn & Suites	Dr. Kevin Priest
BB&C Car Care	Moritz Materials	Whitcomb & Hess
Charles River		Whitaker-Myers Insurance Group

SPROUT (\$250-\$499)

Ashland Area Chamber of Commerce	Comprehensive Construction	Lutheran Village
Ashland Board of Realtors	D.C. Meyer Masonry	Paullin Driveway Sealing LLC
Ashland Eyecare	Emerald Awards	Pro Wrench
Ashland Railway	Erie Basin RC&D	Rossi Machinery
Baker, Bowman & Company	Firelands Electric Cooperative	Shelby Joes Sloppy Joe Sauce
Classy Chassis	Johnson Auto Body & Repair	Uncle Rick's Secret Spice, LLC
Coldwell Banker Ward Real Estate	Jones Rental Inc.	Wayne Savings



MOHICAN AREA GROWTH FOUNDATION BUSINESS SPOTLIGHT

BREW'D—HAYESVILLE

Margi Yeater took an idea and turned it into a dream. Her daughter, Libby, was the one who came up with the name, BREW'd. The difference between Margi's donuts, compared to others, is that she bakes her donuts instead of frying them. To ensure that their donuts are always fresh, Margi starts baking every morning around 3am. More than just coffee and donuts, BREW'd offers a variety of breakfast sandwiches, bagels, quiche, frappes, and even smoothies. For added convenience, BREW'd even has a drive thru. Customers can request special orders for events such as weddings and graduation parties.



103 PERFORMANCE—JEROMESVILLE

Paul Soles was 8 years old, when his father bought his first Harley Davidson Motorcycle and Paul immediately fell in love. It was when Paul was a junior in High School that he decided he wanted to go to college to work on motorcycles, focusing on Harley Davidsons. Paul attended the Power Sports Program at Ohio Technical College. After graduating in 2010, Paul took a job at a local motorcycle shop and worked there for 7 years. When he left there for another job opportunity, he started a small side shop out of his garage, working nights and weekends. It was when the Jeromesville Gas Station went up for sale that Paul decided to purchase it and start his own full-time shop, 103 Performance.



103 Performance offers simple services for Metric Bikes such as; oil changes and tires changes, Dyno Tuning for any motorcycle, and specialized services for Harley Davidson Motorcycles. 103 Performance also offers 24/7 gasoline pumps.

